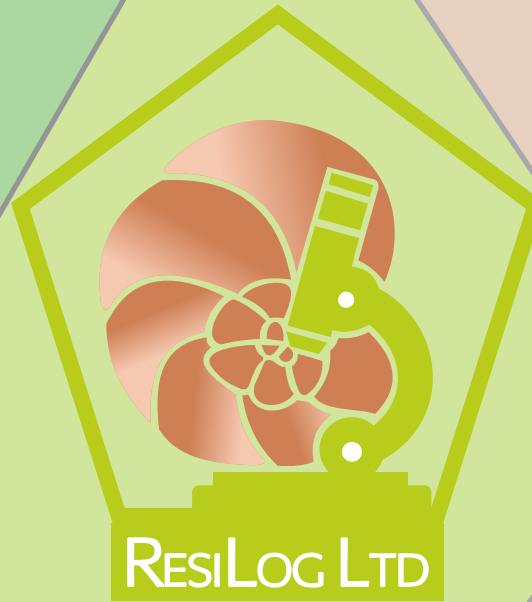


RESILOG LTD

CORPORATE PROFILE 2025



"THE PAST IS THE KEY TO THE FUTURE"

Contact: (868) 388-6443 / 343-7374
Email: info@resilogltd.com
Web: resilog.com
Address: #173B Caroni Savannah Road Charlieville, Chaguanas



OUR COMPANY



"THE PAST IS THE KEY TO THE FUTURE"

Established in 2019, **ResiLog Ltd** is a local Biostratigraphic organization that provides integrated services in Geology and Micropalaeontology for the Oil and Gas sector. These services are available for both Exploration and Development projects in Trinidad and the Caribbean. Our specialization is in biostratigraphy with quantitative rapid online analysis in-house or at the wellsite.

OUR TEAM



Our team combined has over 40 years' experience diligently working in all Trinidad basins integrating geological and geophysical projects with biostratigraphic data. We have extensive knowledge on stratigraphy and have worked on biostratigraphy analyses both locally and regionally.

- We are the team for you providing real-time age monitoring at well-site or in the office.
- Lowering your drilling costs by assisting in picking TD, casing and coring points.
- Promoting the Integration of biostratigraphic, geochemical, palaeoenvironmental and lithological datasets into a sequence stratigraphic framework.
- Assessing legacy data and quality controlling previous interpretations to provide 21st century interpretations



VISION



ResiLog Limited aims to be the best service provider and is committed in developing and integrating new applications for geological projects while applications for geological projects while staying grounded in our core values of quality and integrity.

MISSION



- A local and genuine micropalaeontology service provider recognised for timely and most cost-effective solutions .
- We pride ourselves to stick to your deadlines with high quality data No project is too big or too small.
- Ensuring knowledge transfer to our clients.



Goals

Safety is the foundation for everything we do at ResiLog Limited. The health, safety, security and the environment is a highly regarded value. We continually strive to improve the safety and efficiency to secure a sustainable future.

SAFETY



OUR SERVICES



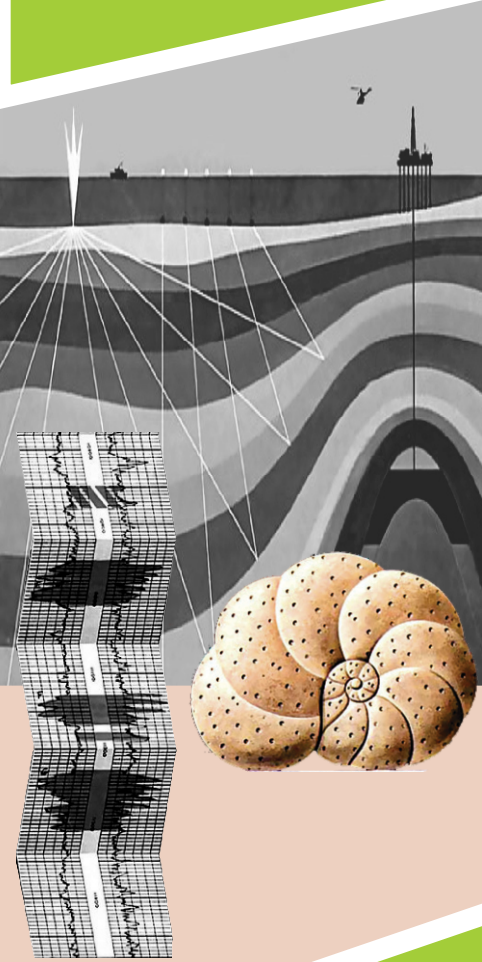
Biostratigraphy

Micropalaeontology

- Rapid Online Services
- Quantitative
- Paleo-ecology
- Determining TD and Casing Point
- Sequence Stratigraphy 3rd order and higher frequency cycles

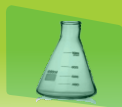
Nannopalaeontology

Palynology

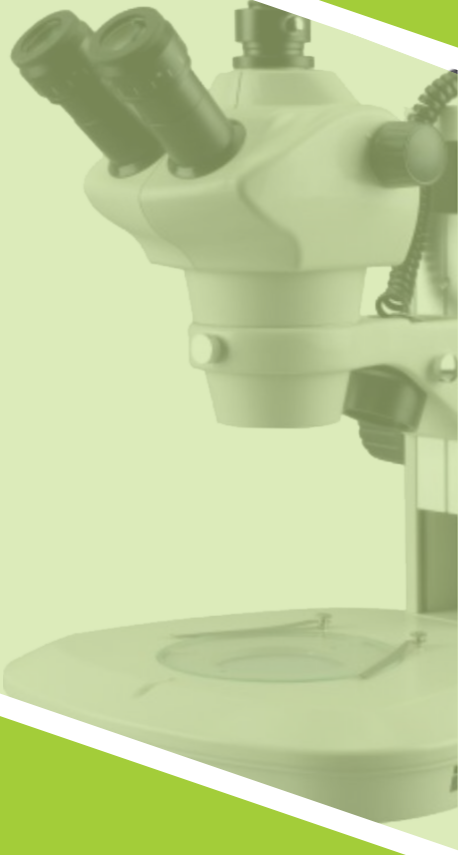


Micropalaeontology database

- Compiling legacy reports, charts and microfossil listing into easily used datasets
- Building corporate databases for clients which can be utilised for correlation of strata and effective use of chronostratigraphic results.



OUR SERVICES

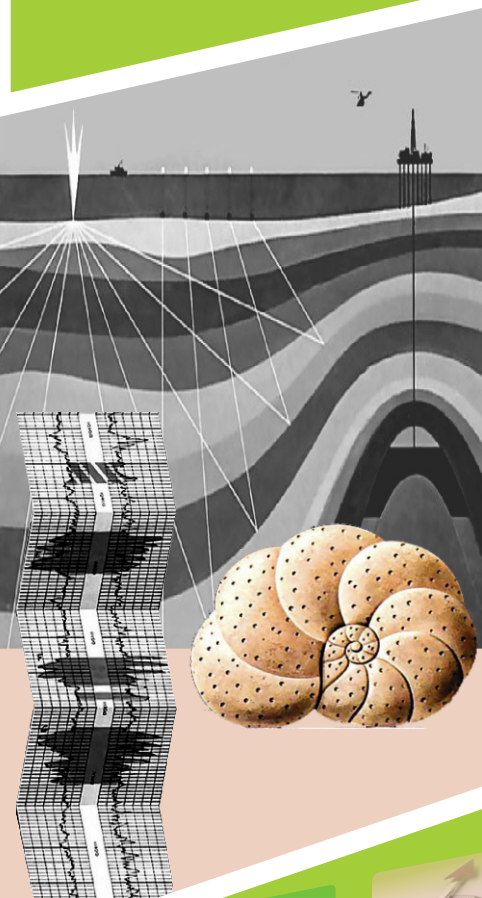


Integration

Resolving palaeontological data sets by integrating with geological, petrophysical and seismic data.

Regional Studies

- Legacy data can be analysed and combined with new sample analyses forming the core biostratigraphic data set for multi-well regional studies. The database approach will yield a coherent interpretation between wells with vintage data types.
- Providing a fully integrated sequence stratigraphic interpretation with seismic data and biostratigraphic data.



Mud Logging / Residue log

- The residue log can be a cost effective option for stratigraphic control while drilling. The residue log is the best proxy for the gamma ray curve providing good hole conditions.

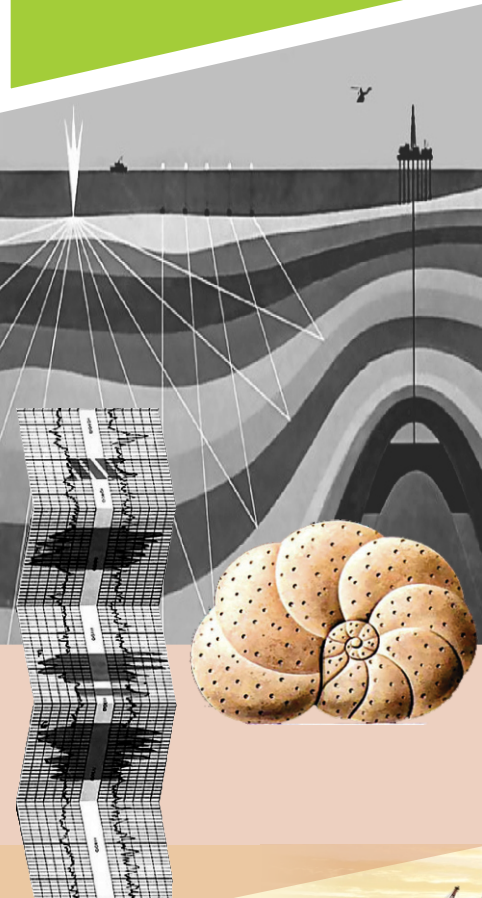


OUR SERVICES



Geology and Geophysics (Services designed to suit client requirements)

- Wellsite
- Geological and Geophysical Interpretations
- Facies mapping & Depositional Environment



Geochemistry Consultancy

Member of the Consultancy Team is qualified with particular specialisms (molecular geochemistry, biomarkers, etc.).

- We advise on, and interpret, geochemical data and basin modelling projects but we do not provide analytical services directly. We would liaise with analytical service companies on behalf of our clients, designing and facilitating an optimal geochemical programme as required. Basin modelling work relies on geochemical data for calibration and inputs for source hydrocarbon potential, our studies begin with compilation and quality assurance.



OUR SERVICES



Projects can vary from;

- Source rock evaluation through to detailed hydrocarbon characterisation (oils and gases) from regional to project scales.
- Reservoir geochemical evaluation.

